

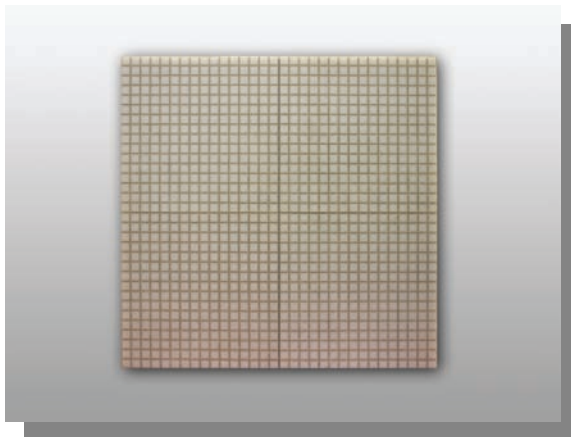
LED Monogram

Application

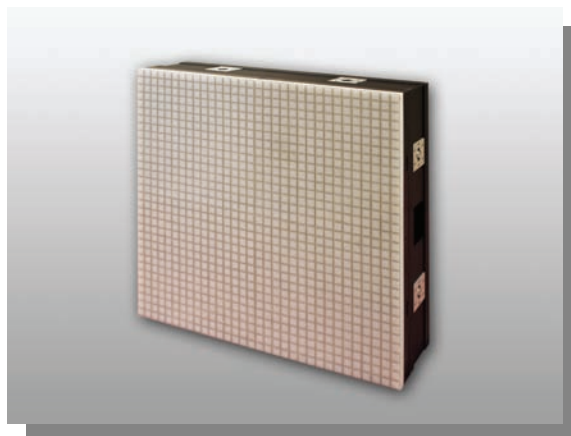
- Show & stage background , bar& club lighting or video decoration , mainly show for rental, IP65 standard.

Features

- Stable, durable, quick assemble and disassemble, quick power and singal connection.

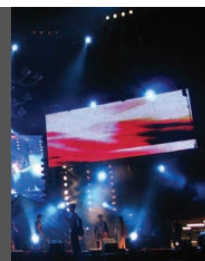


- World Cup 2010 at Hong Kong Cable TV



- Product shot

Specifications of LED Monogram



Specifications

Specification	D16	D20	D25	D31.25	D37.5
Pixel pitch	16mm	20mm	25mm	31.25mm	37.5mm
Pixel Density	3906 Dots /m ²	2500 Dots /m ²	1600 Dots /m ²	1024 Dots /m ²	711 Dots /m ²
LED Configuration	1R1PG1B	1R1PG1B	1R1PG1B	1R1PG1B	1R1PG1B
IM/Dots	16 Dots × 16 Dots	16 Dots × 16 Dots	8 Dots × 8 Dots	8 Dots × 8 Dots	8 Dots × 8 Dots
IM Size	256mm*256mm	320mm*320mm	200mm*200mm	250mm*250mm	300mm*300mm
Panel Size	W768×H512×D85(mm)	W340×H640×D85(mm)	W600×H600×D85(mm)	W500×H500×D60(mm)	W600×H600×D60(mm)
Panel/Pixe	48*32=1536 Dots/Panel	32*32=1024 Dots/Panel	24*24 = 576 Dots/Panel	16*16 = 256 Dots/Panel	16*16 = 256 Dots/Panel
Panel Weight	15kg/m ²	12kg/m ²	10kg/m ²	8kg/m ²	10kg/m ²
Viewing Distance	16~300m	20~300m	25~500m	31~500m	40~500m
Viewing Angle	H:110°;V:50°	H:110°;V:50°	H:110°;V:50°	H:110°;V:50°	H:110°;V:50°
Temperature Range	Storage: -40°C ~ +85°C ; Working: -20°C ~ +50°C				
Average Power Consumption	240Watts/m ²	200Watts/m ²	120Watts/m ²	50Watts/m ²	40Watts/m ²
Max Power Consumption	≤ 800Watts/m ²	≤ 600Watts/m ²	≤ 400Watts/m ²	≤ 160Watts/m ²	≤ 120Watts/m ²
Graphics Board	DVI				
Drive IC	Constant Currency				
Frame Rate	≥ 60Hz				
Grey Scale	16384 Levels per colour/4.4trillion				
Calibrated Brightness	≥ 5500 Nits	≥ 5000 Nits	≥ 4000 Nits	≥ 2500 Nits	≥ 1700 Nits
(IP grade)	IP65	IP65	IP65	IP65	IP65
Brightness Adjust	continuous adjusting(manual/automatic)				
Working Voltage	(AC)220V±15% or 110V±15%				
(Video Signal)	RF, S-Video, RGB, RGBHV, YUV, YV, COMPOSTION				
(MTBF)	≥ 3500 hours				
(Life Time)	100,000 hours				
(Dead Dot)	<0.0001				



Address: Unit D, 17/F, Gemstar Tower, No. 23 Man Lok Street, Hung Hom, Kowloon, Hong Kong

Tel : (852) 2711 0222
 Fax : (852) 2761 0633
 URL : www.impacthk.com

